

Annual Report

Rainbow Fleet

FY 2013



July 1, 2012 – June 30, 2013

Rainbow Fleet's Mission:

To provide innovative, educational child development programs and services that enhance the quality of life for children, their families and child care professionals.

FY 2013 Board of Directors: as of June 30, 2013

President: Mike Gibson, CPA/Partner, Cole & Reed

Treasurer: Interim, Mike Gibson, CPA/Partner, Cole & Reed

Directors:

Adrienne Butler, Oklahoma Department of Libraries

Kathy Carey, Rose State College

Mei Cheng, Community Leader

Matilda Clements, Community Leader

Morgan Harris, Green Bambino

Kelly Padgham, Strategic/Organizational Planner, Business Strategies

Becky Roten, Community Leader

Patti Tepper-Rasmussen, Owner, Learning Tree Toy Store

Mary Wolf, Oklahoma City, Banker, UMB Bank

Lisa Wood, Metropolitan Library System

Advisory Board Members:

Peggy Loeffler, Rainbow Fleet Founding Matriarch

Laura Pringle, Attorney, Pringle & Pringle

Donna Richardson, University of Oklahoma

Program Staff: FY 2013: as of June 30, 2013

Interim Executive Director-

Kim Quinn, RN

Child Care Resource and Referral-

Lisa Fry, Resource and Referral Coordinator

Lindsay Brooks, Referral Specialist

Kathy Carr, Referral Specialist

Lisa Oliver, Referral Specialist

Maria Zamacona, Hispanic Services Referral Specialist

Child Care Food Program-

Kassi Reddell, Food Program Coordinator

Alfreda Little, Food Program Monitor

Quality Enhancement Initiative (QEI)

Heather Mellor, Program Specialist

Administrative Assistant-

Sharon Thrush



*Serving children and families
In central Oklahoma since 1972*

Programs of Service:

Child Care Resource and Referral – through consultation with our child care resource and referral specialists, families, child care providers and the community are linked with accurate, useful information about child care options, quality indicators, and related resources that will assist with consumer education. Rainbow Fleet is a member of the Oklahoma Child Care Resource and Referral Association, Inc. and the National Association of Child Care Resource and Referral Agencies, and serves the children, families and communities in Cleveland and Oklahoma counties.

Child Care Resource Center – we offer parents, families and child care providers suggestions, consultation and technical assistance on appropriate activities, curriculum, educational materials and resources for children in a unique lending library setting.

Hispanic Services – our Hispanic Referral Specialist is bilingual and provides referral assistance and consumer education to our Hispanic population.

Quality Enhancement Initiative – generously funded by the Inasmuch Foundation, this new project helps licensed family child care homes provide higher quality care. The goal is to advance programs at least one star level in Oklahoma’s quality rating and improvement system. We offer intensive training and technical assistance to eligible programs.

Child Care Training Workshops – we coordinate training and consultation to assist child care providers in meeting training requirements for licensing, and other levels of early childhood professional development. We offer trainings such as First Aid/CPR, Accident and Disease Prevention, and Sensory Ideas for Infants and Toddlers.

Child Care Food Program – as a sponsoring organization with the Child and Adult Care Food Program, we reimburse family child care home providers for the nutritious meals and snacks served to children that meet USDA guidelines.



FY 2013 Service Fast Facts:

Our Child Care Resource and Referral service delivery area of Cleveland and Oklahoma Counties includes this many children and child care facilities:*

Child Population, age 0 – 12:	135,240
% with working parents:	64.5%
# of Child Care Centers:	359
# of Family Child Care Homes:	579
Total Child Care Capacity:	32,971

*2012 State Summary Oklahoma Child Care and Early Education Portfolio

FY 2013 Service Outcomes:

Our services include providing the following assistance through telephone communication and consultation with families and child care providers:

Calls requesting referrals:	1,592
Calls requesting other info:	38
Spanish referral calls:	47
Provider technical assistance:	236
Internet referrals:	353

Our website provides information about our services and links to additional resources that support children, families and child care professionals.

www.rainbowfleet.org

Child care providers come to Rainbow Fleet for trainings, workshops and consultation that will assist them in meeting training requirements for licensing, improving the quality of care in their environment, and other levels of early childhood professional training and development:

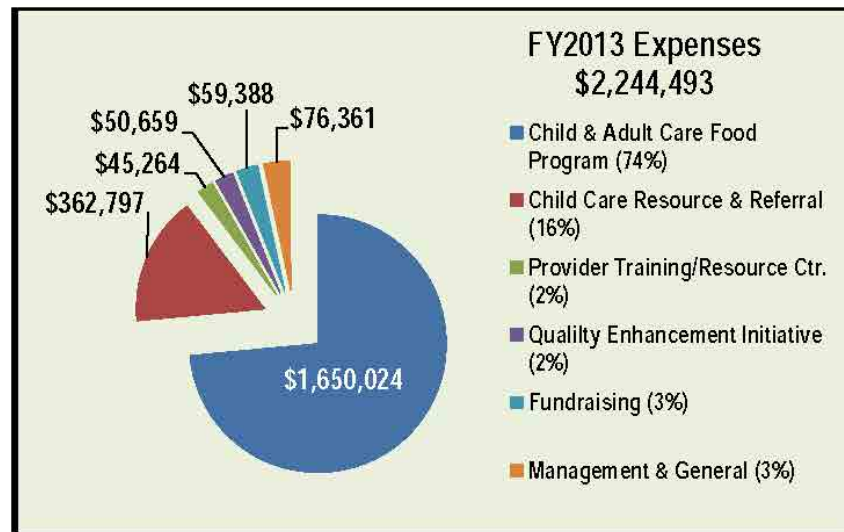
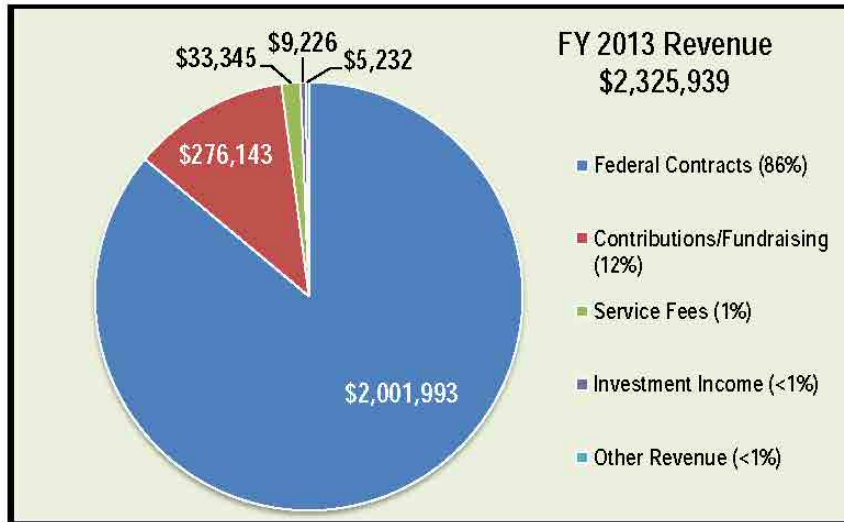
Number of trainings provided:	72
Number of clock hours:	227
Number of participants:	1,117
Technical Assistance consultations:	
At Child Care Facility-	147
At Rainbow Fleet-	7
By phone & email	82

Rainbow Fleet is a sponsor for 165 Family Child Care Home Providers located in Canadian, Cleveland, Garvin, Grady, Logan, McClain, Oklahoma and Pottawatomie Counties with a total of over 1,600 children participating in the Child and Adult Care Food Program:

Average number providers claiming:	164
Average number children claimed:	1,600
Total number of meals/snacks served:	1,039,844
Number of dollars reimbursed for meals:	\$1,475,442*

*from independently audited FY 2013 financial statements

Finances at a Glance FY 2013:



Finances at a Glance from independently audited FY 2013 financial statements

Program Funding Sources:

Major funding for the programs of Rainbow Fleet is provided by:

- Oklahoma Child Care Resource and Referral Association, Oklahoma Child Care Services, Oklahoma State Department of Human Services.
- Child and Adult Care Food Program, Oklahoma State Department of Education, USDA
- Inasmuch Foundation
- Oklahoma City Community Foundation
- Parman Foundation

For more information about our programs and services, or to learn more about how to contribute time, talent or resources, please contact:



**Child Care Resource and Referral
3024 Paseo**

Oklahoma City, OK 73103-1021

Office: 405-521-1426 Fax: 405-521-1472

www.rainbowfleet.org

Professional Affiliations and Memberships:

